



ALL-IN-ONE



MOBILITY



KIOSK



PANELS PC



PRINTERS



DISPLAYS



ACCESSORIES

ADVANTECH

AURES

PT803 SERIES

POS multi-interface
cubic thermal printer



"Reverse" thermal
printer with multiple
options & interfaces

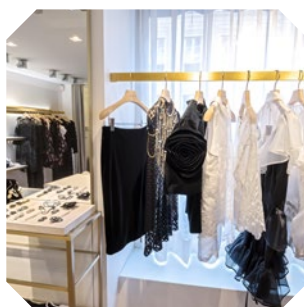
www.rm spos.co.uk

This thermal receipt printer with a cubic design is available in two models, with different multi-interface options, including a Wi-Fi and Bluetooth version; bi-positionable, it can be turned over on the sales counter to offer a dual paper output: a vertical one (output located on top cover of the printer) and a front one - depending on the configuration chosen and the type of space available at the POS.

The **PT803** is available in two versions with different interfaces to choose from: the first model has a triple **USB / RS232C / Ethernet interface**; the second additionally integrates WIFI and Bluetooth to support the growing demand for wireless and mobile technologies at the POS.

The compact and bi-positionable format of this peripheral allows it to switch from one side to the other to offer two options for ticket output: front paper output (located on the front side) or hood output (on top cover of the device), depending on user needs.

The integration of a discreet cable cover, integrated into the printer housing, makes it possible to conceal the connectors, for an ever more attractive appearance at the point of sale; the same goes for the addition of discreet stability pins under the peripheral base, reinforcing the proper functioning and reliability of the peripheral over time.



PT803 SERIES



POS thermal receipt printer with bi-positionable cubic design

Dual paper output

Two distinct models offering multi-interfacing and multiple connectivity:

- Triple USB, Serial RS232 C and Ethernet interface
- same as above + WI FI & Bluetooth

Printing speed 260 mm / sec

Discreet and aesthetic cable cover

Supplied with all cables and configuration utility



MODEL	PT803 SERIES
Printing method	direct thermal printing 203 Dpi
Printing speed	260 mm / sec
SD RAM	4 MB
Flash SRAM	4 MB
THERMAL PAPER	
Paper width (max)	58/80 mm (with adapter included)
Paper thickness (max)	0.056 - 0.1
Max. roll diameter	83 mm
Paper Loading	automatic
Sensors	paper out, cover open
PAPER CUTTER	
Cutter	guillotine-type cutter
Type of cut	partial or total cutting
CHARACTERS	
Codpage	46
Chinese	GBK 24 × 24 dots
Alphanumeric	ASCII 9 × 17, 12 × 24 dots
Graphics	Support bitmap printing with different density and user defined bitmap printing. (Max size of each bitmap is 64K, the total size of bitmap is 256k)
1D Barcodes	UPC-A, UPC-E, EAN8, EAN13, CODE39, ITF, CODEBAR, CODE128, CODE93
2D barcodes	PDF417, QR code
AVAILABLE INTERFACES	
Model 1	USB + RS232 + ETH + Cash Drawer
Model 2	USB + RS232 + ETH + Wi-Fi + BT + Cash Drawer
Buzzer	integrated
MISCELLANEOUS	
Print head life	150 km
Paper cutter life	about 2 million cuts
Temperatures	0 to 45° C (during operation) ; -30 to + 60 ° C (storage temperature)
Humidity	5% to 95%.
Power supply	external AC/DC adapter – 24V – 2.5 A - Power Cord NOT included
Paper load	Front or Top loading
Emulation	ESC/POS compatible
Drivers	Win10 / Win11 / POSReady / Linux / OPOS / WinCE, Win Mobile, Android, iOS
LED indicator	Power LED Blue LED / Paper LED Orange LED / Error LED Red LED
Dimensions (L x W x H)	132 x 134.8 x 132 mm
Weight	1.37 kg (Without paper roll)
Colours	black / white
Page mode	support
Safety / EMC	CE/FCC/CCC
LED indicator	Power LED Blue LED / Paper LED Orange LED / Error LED Red LED

Specifications are subject to change without notice - © ADVANTECH-AURES - PT803Series_datasheet_EN_1.00-2025

