

# SUNMI T3 PRO Smart Desktop Terminal

The next level of Android desktop.

Powered by  
**SUNMI OS**

Compatible with  
**SUNMI DMP**



## Flagship performance unlocks extraordinary user experience.

High performance octa-core 6nm processor, up to 2.7Ghz. Equipped with large-capacity memory of 6GB RAM+128GB ROM delivers premium-tier features.

## Pioneering in engineering.

The sleek yet durable aluminum alloy design strikes the perfect balance between weight, ruggedness and outlook. Bezel-less high definition display, comes with high-transparency anti-fingerprint coating.

## Interactive design for an ultimate user perception.

Designed with NFC tab on screen for both the main screen and customer facing screen (optional). Easily detachable customer display that comes with a 1.5m extension cord to improve flexibility.

## Have your device tailored to your brand.

Apply your logo and brand color to the device to show your brand personality.



## Display Options

**15.6" +10.1"**

Main 15.6" FHD,1920\*1080  
Secondary 10.1" HD, 1280\*800



**15.6" +15.6"**

Main 15.6" FHD,1920\*1080  
Secondary 15.6" FHD,1920\*1080



**15.6"**

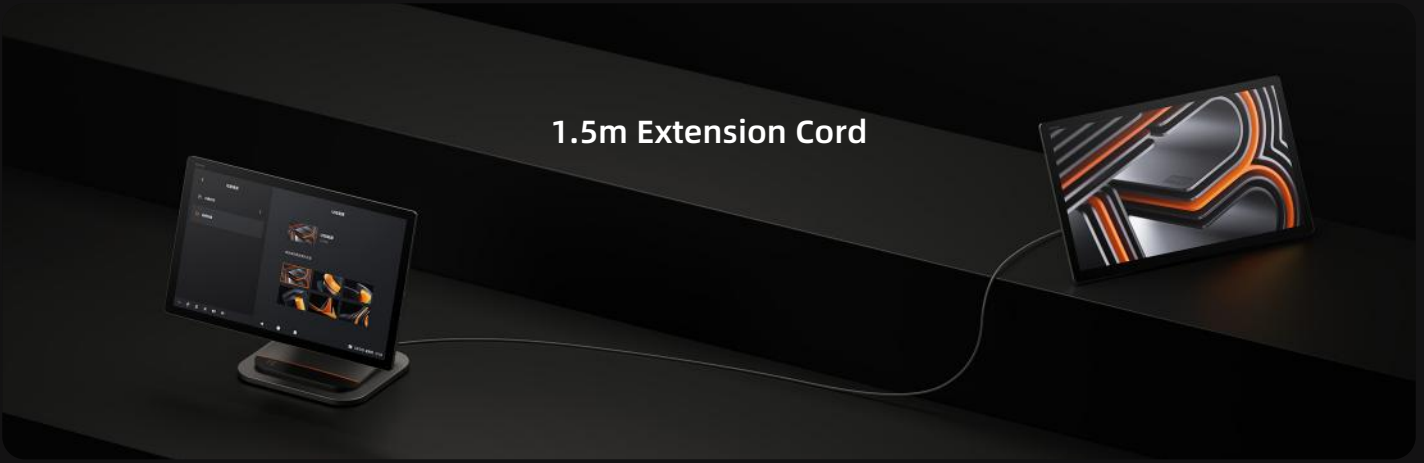
Single 15.6" FHD,1920\*1080



## Flipable Main Display



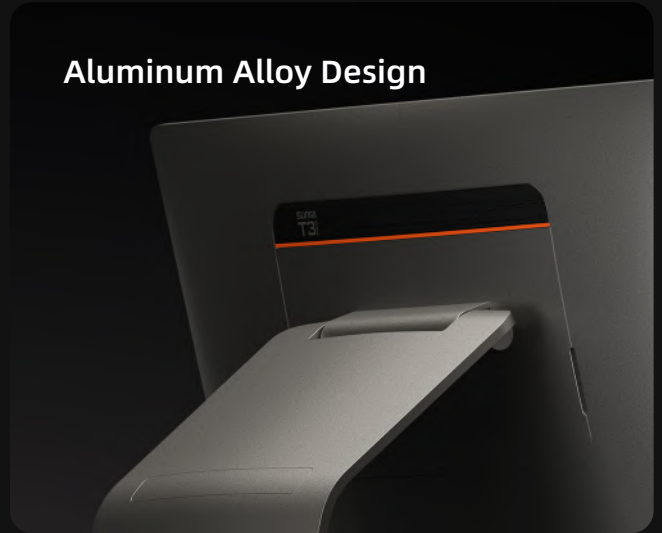
## 1.5m Extension Cord



## Aluminum Alloy Design



## Hidden Cabling



## SUNMI T3 PRO Tech Specs

### Product Model

L15B1

### OS

SUNMI OS  
(based on Android 13)

### CPU

Kyro-670 Qualcomm  
cota-core up to 2.7GHz

### Memory

6GB RAM+128GB ROM

### Display

15.6" FHD 1920\*1080  
400nits, anti-fingerprint (AF)

### Camera

Front camera, single lens,  
8MP

### Card Reader

NFC under the screen

### External Memory

1\*MicroSD (TF card)  
Up to 2TB supported

### Speaker

2\* 2W

### Network

LAN 1000M

### Wi-Fi

2.4GHz & 5GHz & 6GHz  
IEEE 802.11 a/b/g/n/ac/ax  
supported

### Bluetooth

Bluetooth 5.2 and  
BLE supported  
BT Long Range (farthest  
distance 200m)  
supported

### Indicator Light

Power indicator light

### Buttons

1\*Power button (lock screen  
and fingerprint recognition)  
1\*Download button (hidden  
hole)

### Ports

3\*USB 2.0 Type A port  
1\*USB 3.0 Type A port  
1\*USB Type C  
2\*Micro USB port  
1\* Micro-USB debug port  
1\*RJ45  
1\*RJ11  
1\*RJ12  
1\*DC

### Accessories

15.6" separate monitor,  
FHD 1920\*1080  
10.1" separate monitor,  
HD 1280\*800

### Power Adapter

Input: AC 100~240V/1.7A  
Output: DC 24V/2.5A

### Dimensions (L\*W\*H)

298mm\*371.5mm\*170mm

### Weight

T3 PRO: 3.3kg  
15.6" separate monitor: 1.7kg  
10.1" separate monitor: 0.9kg

### Environment

Operating temp.: 0°C~40°C  
Storage temp.: -20°C~60°C

\*Data regarding dimension and weight tested internally at SUNMI labs, actual results may be slightly different according to different measurement methods.

# SUNMI T3 PRO MAX Smart Desktop Terminal

The next level of Android desktop.

Powered by  
**SUNMI OS**

Compatible with  
**SUNMI DMP**

 Google  
Mobile  
Services

## Flagship performance unlocks extraordinary user experience.

High performance octa-core 6nm processor, up to 2.7Ghz. Equipped with large-capacity memory of 6GB RAM+128GB ROM delivers premium-tier features.

## Pioneering in engineering.

The sleek yet durable aluminum alloy design strikes the perfect balance between weight, ruggedness and outlook. Bezel-less high definition display, comes with high-transparency anti-fingerprint coating.

## Interactive design for an ultimate user perception.

Designed with NFC tab on screen for both the main screen and customer facing screen (optional). Easily detachable customer display that comes with a 1.5m extension cord to improve flexibility.

## Have your device tailored to your brand.

Apply your logo and brand color to the device to show your brand personality.

## A modular design with an internal high-speed 80mm Seiko printer.

Navigate your rush hours like a pro with quick printing. The printhead is easy to remove and install, greatly cutting your maintenance cost.

## Display Options

**15.6" +10.1"**

Main 15.6" FHD,1920\*1080  
Secondary 10.1" HD, 1280\*800



**15.6" +15.6"**

Main 15.6" FHD,1920\*1080  
Secondary 15.6" FHD,1920\*1080



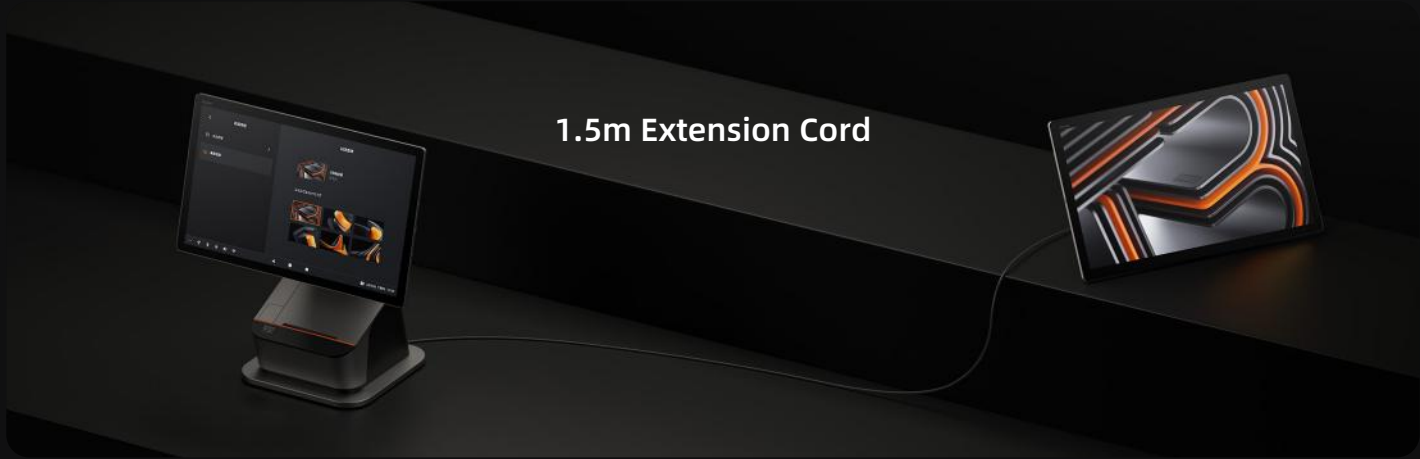
**15.6"**

Single 15.6" FHD,1920\*1080



## Flipable Main Display





1.5m Extension Cord



Hidden Cabling



Modular Design

## SUNMI T3 PRO MAX Tech Specs

<p><b>Product Model</b> L15A1</p>	<p><b>OS</b> SUNMI OS (based on Android 13)</p>	<p><b>CPU</b> Kyro-670 Qualcomm cota-core up to 2.7GHz</p>	<p><b>Memory</b> 6GB RAM+128GB ROM</p>	<p><b>Display</b> 15.6" FHD 1920*1080 400nits, anti-fingerprint (AF)</p>
<p><b>Camera</b> Front camera, single lens, 8MP</p>	<p><b>Card Reader</b> NFC under the screen</p>	<p><b>External Memory</b> 1*MicroSD (TF card) Up to 2TB supported</p>	<p><b>Speaker</b> 2* 2W</p>	<p><b>Network</b> LAN 1000M</p>
<p><b>Wi-Fi</b> 2.4GHz &amp; 5GHz &amp; 6GHz IEEE 802.11 a/b/g/n/ac/ax supported</p>	<p><b>Bluetooth</b> Bluetooth 5.2 and BLE supported BT Long Range (farthest distance 200m) supported</p>	<p><b>Indicator Light</b> Power indicator light</p>	<p><b>Ports</b> 3*USB 2.0 Type A port 1*USB 3.0 Type A port 1*USB Type C 2*Micro USB port 1* Micro-USB debug port 1*RJ45 1*RJ11 1*RJ12 1*DC</p>	<p><b>Printer</b> Built-in 80mm thermal printer Auto cutter: equipped Print speed: 250mm/s Paper roll OD: 80mm</p>
<p><b>Accessories</b> 15.6" separate monitor, FHD 1920*1080 10.1" separate monitor, HD 1280*800</p>	<p><b>Power Adapter</b> Input: AC 100~240V/1.7A Output: DC 24V/2.5A</p>	<p><b>Dimensions (L*W*H)</b> 390mm*371.5mm*200mm</p>	<p><b>Weight</b> T3 PRO MAX: 5.5kg 15.6" separate monitor: 1.7kg 10.1" separate monitor: 0.9kg</p>	<p><b>Buttons</b> 1*Power button (lock screen and fingerprint recognition) 1*Download button (hidden hole)</p>
<p><b>Environment</b> Operating temp.: 0°C~40°C Storage temp.: -20°C ~ 60°C</p>				

\*Data regarding dimension and weight tested internally at SUNMI labs, actual results may be slightly different according to different measurement methods.