

Industrial level handheld POS

# SUNMI L2



5.0" HD IPS display

Qualcomm chip

2GB RAM+16GB ROM

Built-in dual card slot supports 4G full Netcom NFC

Optional Zebra scan head 1D/2D professional scan code

Optional PSAM

Across the industrial and commercial consumer fields



Scanning



IP67 rugged design



5000mAh



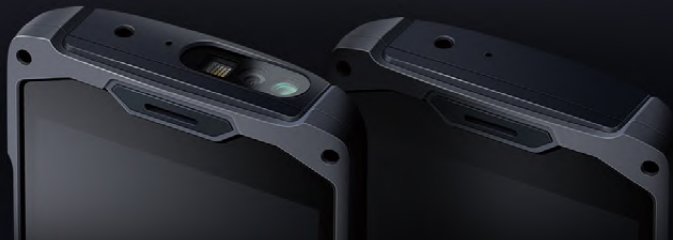
Optional single stand charger

## SUNMI L2

### Technical specifications

2 types of configuration

Zebra scanner / without scanner



<p><b>OS</b> Android 7.1 SUNMI OS</p>	<p><b>CPU</b> Qualcomm quad-core 1.4GHz</p>	<p><b>Memory</b> 2GB RAM + 16GB ROM</p>	<p><b>Display</b> 5" HD 1280x720 IPS Capacitive Multi-touch Screen</p>	<p><b>Adapter</b> Input: AC 100-240V Output: DC 5V/2A</p>
<p><b>Wi-Fi</b> 2.4G/5G Support IEEE 802.11a/b/g/n</p>	<p><b>Bluetooth</b> Support BLE Support Bluetooth 2.1/3.0/4.0</p>	<p><b>Speaker</b> 1W</p>	<p><b>NFC</b> Mifare/Felica/ISO 14443 Type A/B IS15693</p>	<p><b>Key</b> Power button(lock screen button) Volume up/down button Home button</p>
<p><b>Battery</b> Non-removable lithium battery 3.7V/5000mAh</p>	<p><b>Communication</b> 2G/3G/4G</p>	<p><b>Camera</b> Camera 5.0MP, Flashlight, AF Support 1D/2D Support 720p video recording</p>	<p><b>MicroSD (TF)</b> Support, Up to 64G</p>	<p><b>SIM Card Slot</b> 1x SIM Card slot Support 1.8V/3.0V</p>
<p><b>Port</b> 1x Type-C USB Support OTG</p>	<p><b>Environment</b> Operating temperature: -10°C ~ 40°C Storage temperature: -20°C ~ 50°C Protection rating: IP67 Falling height: 1.2 m</p>			

#### Optional



PSAM  
PSAM



Scanner  
Zebra 1D/2D code scanning

RMS, Unit 006 Ettrick Riverside, Dunsdale Road, Selkirk TD7 5EB

Phone: 01750 700527

enquiries@rmspos.co.uk - www.rmspos.co.uk

#### Note:

1. Real memory will be reduced due to a number of factors, and there are differences. Operating system also occupies part of the memory.
2. Actual product specifications when sold take precedence over what may be listed at this catalogue; Any changes may be made without prior notification.