

- ALL-IN-ONE
- MOBILITY
- MODULAR
- PANELS PC
- PRINTERS
- DISPLAYS
- ACCESSORIES



# OLC TOUCH 10.1

Additional touch-screen for POS, Retail and Kiosk / OEM applications



## Improved Customer Relationship Management

The OLC Touch 10.1 has been designed for interactive digital display applications at check-outs, enabling various contents (promotional or advertising videos, images, text and multimedia contents, loyalty programs, special contests and customer-consumer surveys, etc...) to be broadcast and proposed at the POS, in a "touch" version.

This second adjustable, standalone 10.1-inch touch screen in wide format (16:9 with 5 points PCAP Technology) is the perfect dual-screen additional equipment to entertain queuing customers, build loyalty campaigns and run promotional or advertising messages; it allows effective and real-time interactive information and communication to customers at retail outlets, leisure and sport venues, museums, bars, restaurants and hotels, etc.

A single USB cable provides all necessary connections (video, power supply, touch function), which is a clear advantage at the POS counter; same with the VESA options which enable wall mount and vertical applications in addition to the standalone version, which can be very useful in specific OEM integration and Kiosk environments.

The OLC Touch 10.1 is available in black or white and can be integrated at the back of AURES YUNO EPOS system (Dual screen Touch system).



TOUCH THE DIFFERENCE



ALL-IN-ONE



MOBILITY



MODULAR



PANELS PC



PRINTERS



DISPLAYS



ACCESSORIES



# OLC 10.1

Additional promotional screen



## Designed for POS digital signage applications

This secondary, adjustable **10.1-inch** non-touch screen has been developed for digital signage applications; it is the perfect equipment to entertain queuing customers, to build loyalty campaigns and to run ad' campaigns.

It is available in two versions - standalone (external) or integrated into the **Sango EPOS** system:

- the standalone version is an addition to any associated EPOS and can be positioned on the check-out counter.
- in its integrated version, the **OLC 10.1** is attached at the back of the **Sango** terminal's touch-screen, forming a complete dual-screen system (sango Evolution).

The **OLC 10.1** screen is adjustable, has LED backlighting, 1024 x 600 px fixed resolution, and 250 cd/m<sup>2</sup> brightness.



# OLC 10.1



## MODEL OLC 10.1

LCD Panel	10,1" - non touch
Brightness	250 cd/m <sup>2</sup>
Resolution	1024 x 600 (fixed)
Viewing angle	(left, right, top, bottom) 70° / 70° / 50° / 70°

## CONNECTIONS

1 USB cable (power and data) for the standalone version

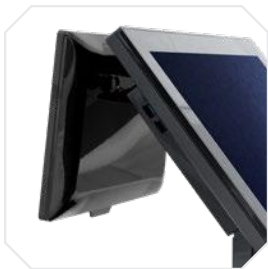
## ENVIRONNEMENT

EMC & Safety	CE, FCC Class A, LVD
Operating temperature	0 ~ 40°C
Storage temperature	-20 ~ 60°C
Humidity level (while operating)	20% to 80% RH - condensation-free
Humidity level (storage)	20% to 85% RH - condensation-free
Dimensions (H x W x D)	standalone version: 190 x 265 x 95mm (7.5" x 10.4" x 3.7") Sango-integrated version: 172 x 263 x 14 mm (6.8" x 10.3" x 0.5")
Weight	standalone version: approximately 1.06 kg (2.3lbs)
Fixings	for the standalone version only 75 x 75 VESA standard



Specifications are subject to change without notice - © AURES 2016

# OLC TOUCH 10.1



## MODEL OLC TOUCH 10.1

Main chip	Display link DL - 4110 (N)
Touch screen	10.1" 16:9 touch panel (PCAP Technology)
Resolution	1024 x 600
Brightness	350 cd/m <sup>2</sup>
Viewing angle	(left, right, top, bottom) 80° / 80° / 80° / 80°
Tilt angle	0 - 80°

## CONNECTIONS

1 single USB cable	180 cm (power, video, touch screen)
--------------------	-------------------------------------

## ENVIRONNEMENT

EMC & Safety	CE, FCC Class A, LVD
Operating temperature	0 ~ 40°C
Storage temperature	-20 ~ 70°C
Humidity level (while operating)	20% to 85% RH - condensation-free
Humidity level (storage)	20% to 85% RH - condensation-free
Dimensions	260 (L) x 200 (H) x 155 (D) (in mm)
Weight	2.1 kg (net)
Options	VESA Brackets 75 x 75 mm Stand-alone version (external device, connected to any EPOS) Dual screen version (integrated to the YUNO system) Pole version (thanks to the VESA fixings)
Colours	Black or White

Specifications are subject to change without notice - © AURES 2018